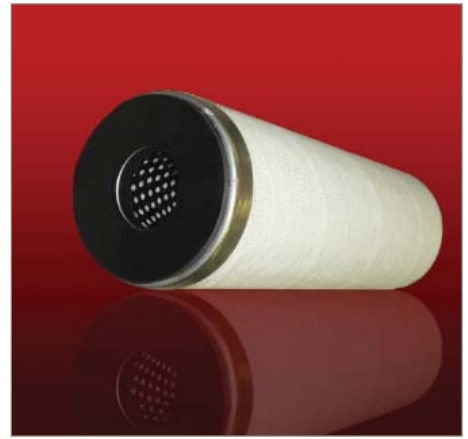


LL Hydrocarbon Liquid-Liquid Coalescer

Optimized for removing water from hydrocarbons or hydrocarbons from water



The all synthetic liquid-liquid coalescers utilize a proprietary, high performance coalescing media in a pleated configuration to improve performance. The liquid-liquid coalescers are designed to remove aerosols and fine particulate contaminants from natural gas streams.

Performance

- Absolute micron rating: down to 0.3 water droplets
- Water removal efficiency: 99% to 99.9%
- 100% removal of solids and liquids larger than 3µm
- Removes water down to 10 ppm, depending on application

Applications

- Jet fuel/ Kerosine, gasoline, diesel and other fuels
- Wide variety of hydrocarbons and intermediates
- Removal of carried-over water
- Final products polishing haze removal
- Protection of catalysts, exchangers and equipment

SPECIFICATIONS	
Length	20", 40", 56", 60"
Outside diameter	6" (152.4 mm)
Maximum differential pressure	2.4 bar (35 psi) at 20°C (68°F)
Recommended change-out	1 bar (15 psi)
End caps	DOE, SOE, threaded base (TB), & high flow style
Media	Proprietary, all synthetic pleated coalescing media
Micron rating	10.0, 2.0, 1.0, 0.3
Absolute removal efficiencies	99.9% with maximum 15 ppm at outlet

Performance and specifications have been calculated in a laboratory environment which may not represent actual field results.

Please contact your representative to tailor a coalescer for your specific application.

Contact Information

Parker Hannifin Corporation
domnick hunter
Process Filtration - North America
 2340 Eastman Avenue
 Oxnard, California, USA 93030

toll free +1 877 784 2234
 phone +1 805 604 3400
 fax +1 805 604 3401
 dhpsales.na@parker.com

www.parker.com/processfiltration



© 2014 Parker-Hannifin Corporation
 domnick hunter Process Filtration - North America
 All Rights Reserved
 Specifications are subject to change without notification.
 For User Responsibility Statement, see www.parker.com/safety

DS_OG_LLHYDRO 5/14 Rev. 1A

ENGINEERING YOUR SUCCESS.